

Can be made to Sue Farr, Schools & Communities Manager, on 0115 955 8811 or email: enquiries@faithinfamilies.org

Comments, Compliments and Complaints

If you have any comments about the School Social Work Service, please contact Sue Farr, Schools & Communities Manager, at Faith in Families on 0115 955 8811 or email sue.farr@faithinfamilies.org

Other services offered by Faith in Families:

Adopt Together, Faith in Families Adoption Service

Adoption Support Service

Children's Therapeutic Groups

School Social Work Service

Training & Consultancy

School Social Work Service at St Edmund Campion Catholic Primary School A Voluntary Academy Parents Leaflet



To find out how you can support our work in schools and the community visit www.faithinfamilies.org

Contact Faith in Families
0115 955 8811
enquiries@faithinfamilies.org

7 Colwick Road, West Bridgford,
Nottingham
NG2 5FR

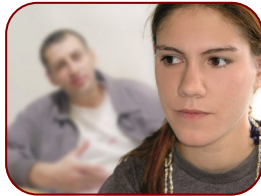
Registered Charity No. 213692
Registered Company Number. 461813



Introduction to the service

The School Social Work Service has been introduced at St Edmund Campion in recognition of the fact that young people sometimes have personal or family difficulties that may benefit from intervention from a Social Worker based in school.

The service provides advice, support and/or counselling as well as signposting to other relevant agencies.



The service is provided to the school by Faith in Families, which is primarily a child care agency providing social work services across the Diocese. The service is provided within the framework of the Children Act 1989, Local Authority protocol relating to child protections and also policies, practice and procedures of Faith in Families and St Edmund Campion.

Aims of the Service

- To identify difficulties and undertake preventative work at an early stage so that young people can be helped to overcome their problems and to reach their full potential

- To nurture the emotional and spiritual development of individual children and young people within the school and home community
- To work together with Local Authorities, other agencies and the community of the church to ensure that young people and families receive the most appropriate service.

The Service

Consultation, visits and support are available to school and families in the community.

Confidential individual and group work can be offered to young people and families to give them the opportunity to share concerns, understand choices and help in reaching informed decisions.

Working together with Local Authorities, other agencies and the community of the church to share knowledge, experience and information (where appropriate)

Parental consent is normally sought. The discussion in the sessions will remain confidential to the young person unless there is a risk of harm to anyone. If you are concerned about your son or daughter meeting with the Social Worker, please contact Claire who will be happy to talk this through with you.

The School Social Work Service staff at St Edmund Campion.

Claire Spruce is the School Social Worker for St Edmund Campion. She is based in the school and is available to students and/or parents/carers currently every Tuesday.

Claire is a very experienced School Social Worker and is employed by Faith in Families and is registered by the HCPC.



Sue Farr is the Schools & Communities Manager in the organisation and supervises the work of the School Social Workers. Lynsey is based at Faith in Families' offices and is a fully qualified Social Worker registered by the HCPC.

Enquiries About the Service

St Edmund Campion
Catholic Primary
School